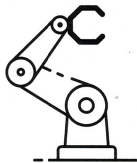




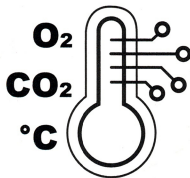
**+ Intelligent**  
**+ In vitro**  
**+ Incubator**

**Intelligent incubator with automated petri dish storage and ID system**



## Automated integrated system

Automated manipulation and recovery of the petri dish without the need to open the main door, by means of a 3 axis robotized arm.



## Environmental stability

Major stability of all the parameters related to the environmental conditions achieved through the functions of the innovative loading system.



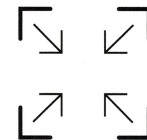
## Reduced consumption

Reduced consumption of electricity and CO<sub>2</sub> due to the minimal loss of internal atmosphere.



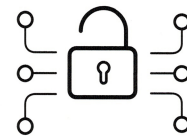
## Tilting System

Personalisation of the Tilting function through change in frequency applied to each room.



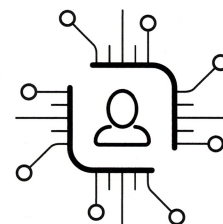
## Space saving

Up to 40 shelves per unit to simultaneously accommodate the petri dishes.



## More safety

High level of security for the operator.  
Personalisation of the system failure signal generated by the integrated warning system.



## Software control

Simple software interface. Digital recognition of the samples. Integration with external software systems.



**Swiss Technology**