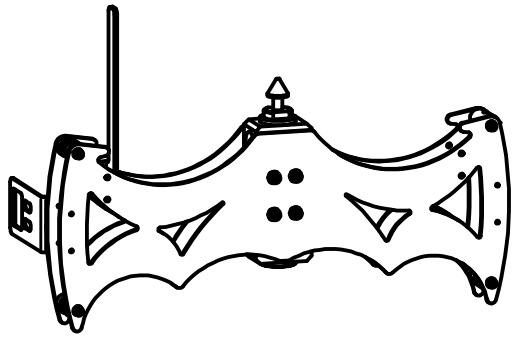
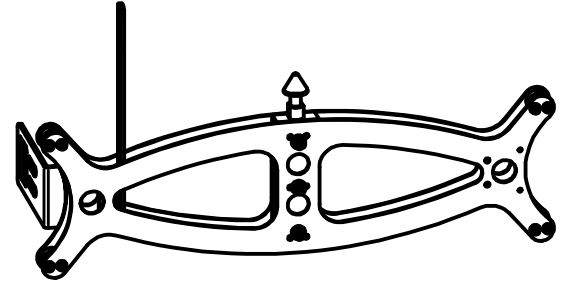


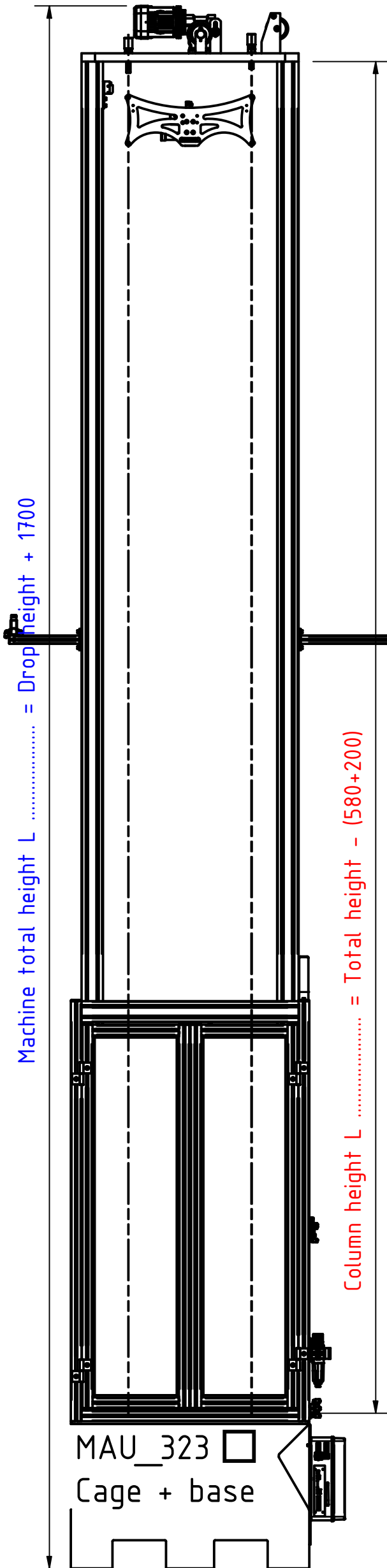
**DROP CARRIAGE**   
MAU\_157\_2W



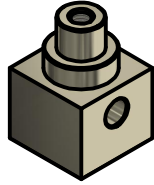
**LIGHT DROP CARRIAGE**   
MTP\_334-14052



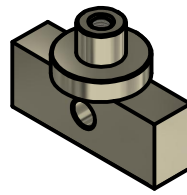
EN1621-1-2-3 Back and body protectors  
EN14021 Stone shield protectors  
EN13158 Horse riders body protectors  
EN14120 Palm wrist and knee protectors



40x40   
IMPACTOR  
MAU\_054\_SF



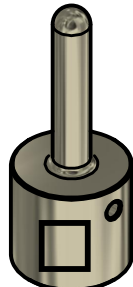
80x20   
IMPACTOR  
MAU\_111\_SF



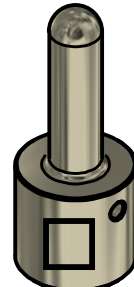
R12,5   
IMPACTOR  
MAU\_174\_2W



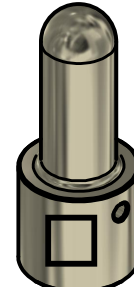
R12,5 ANVIL  
MAU\_051\_SF



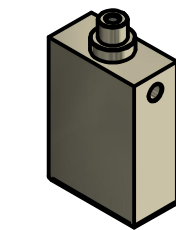
R17,5 ANVIL  
MAU\_050\_SF



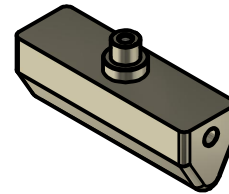
R25 ANVIL  
MAU\_049\_SF



R35 ANVIL  
MAU\_048\_SF



40x80   
IMPACTOR  
MAU\_053\_SF



KERBSTONE   
IMPACTOR  
MAU\_055\_SF



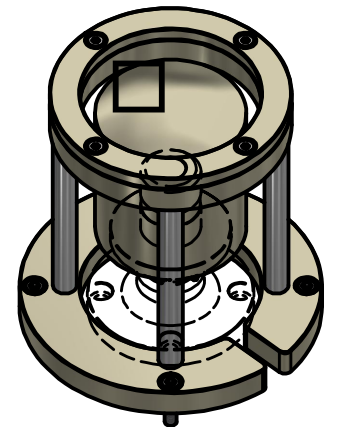
Ø25 IMPACTOR   
MAU\_301\_2W



R50 ANVIL  
MAU\_045\_SF

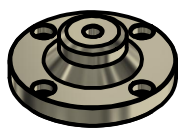


R100 ANVIL  
MAU\_047\_SF



GUARD RING  
13158-14021  
with R150 ANVIL  
MAU\_046\_SF

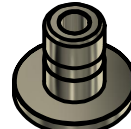
KISTLER   
LOWER SUPPORT  
MAU\_122\_2W



KISTLER   
LOAD CELL  
9041C



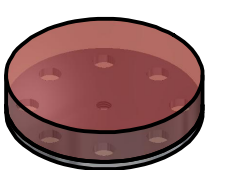
KISTLER   
UPPER SUPPORT  
MAU\_123\_2W



MEP CALIBRATION   
SUPPORT  
MAU\_165\_2W



MEP disc



MAU\_323   
Cage + base

	Sheet: 7	Note: TESTO	Note: TESTO
		Note: TESTO	Note: TESTO
Tolleranze generali ISO 2768-m			
Tolleranze generali lineari			
> 0.5	> 8	> 30	> 120
...8	...30	...120	...400
± 0.1	± 0.2	± 0.3	± 0.5
> 400	> 1000	> 2000	> 4000
...1000	...2000	...3000	> 4000
± 0.8	± 1.2	± 2	± 3
Tolleranze generali angolari			
> 10°	> 10°	> 50°	> 120°
... 50°	... 120°	... 120°	> 120°
± 1°	± 30°	± 20°	± 10°
Description: MAU 1002		Weight Kg: N/A	
Data: 24/10/2019	Scale: 1 : 18	Drawn by: S.C.	
Material:		Treatment:	
		Via Sottomurata n.1 6934 Bioggio tel.: +41(0)91 6001315 fax: +41 (0)91 6001316 info@gtmsa.ch	Drawing nr.: MAU_1002_H5K-STD
			Rev. 0

This drawing contains information confidential. Any reproduction, disclosure or use of this drawing is expressly prohibited without the prior written consent to GTM & Systems SA