

HEADFORMS - ISO DIS 6220



O 625

K 585

G 555

D 525

M 605

J 575

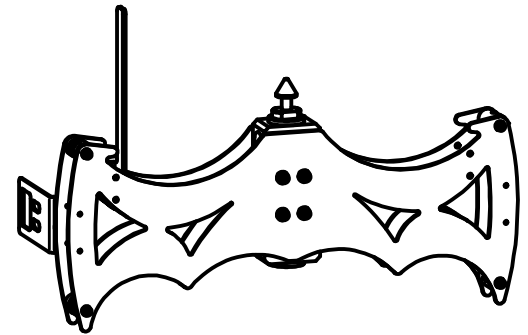
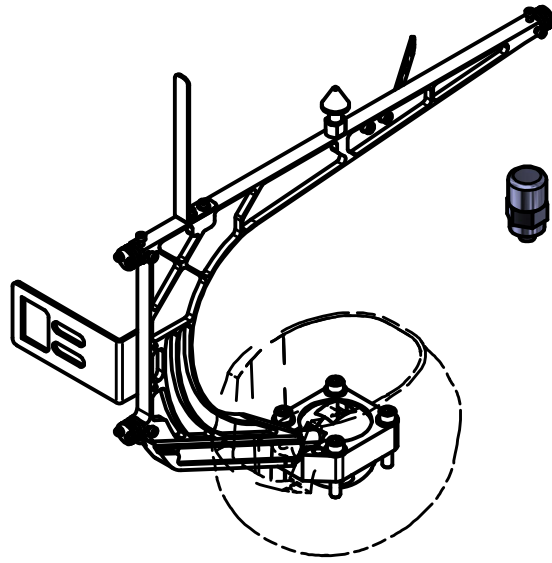
E 535

A 495

DROP CARRIAGE

MAU_157_2W

DROP CARRIAGE + SINGLE AXIS
accelerometer M35B17
CAR_1191_SN_PIB



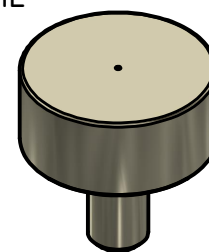
CONICAL
IMPACTOR
MAU_201_EN+MTP_032_EN



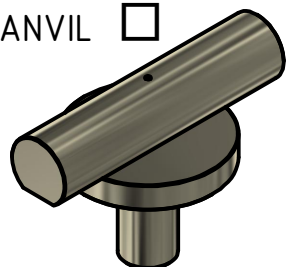
HEMISPHERICAL
ANVIL R50
CE_099



FLAT ANVIL
CE_021



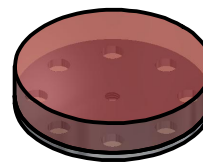
ROLLBAR ANVIL
CE_104_SN



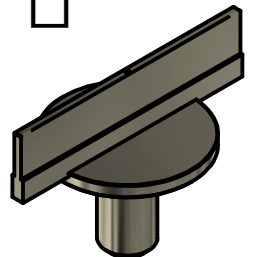
HEMISPHERICAL
ANVIL R48
CE_080



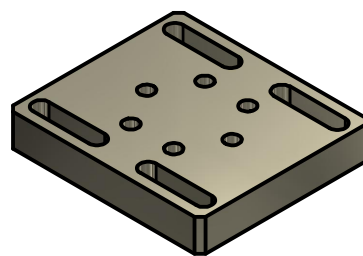
MEP disc



EDGE ANVIL
MAU_036_DOT



BASE FOR
ANVIL SUPPORT
CE_015_A_PIB-NEW-Rev.01



ANVIL
SUPPORT
CE_015-Rev.01



LASER SUPPORT
CE_084_ALU



LASER HOLDER
MAU_236



LASER
LOB-2S-670



Machine total height L = Drop height + 1700

Column height L = Total height - (580+200)

MAU_323
Cage + base

	Sheet: 5	Note: TESTO	Note: TESTO
		Note: TESTO	Note: TESTO
Tolleranze generali ISO 2768-m			
Tolleranze generali lineari			
> 0.5	> 8	> 30	> 120
...8	...30	...120	...400
± 0.1	± 0.2	± 0.3	± 0.5
> 400	> 1000	> 2000	> 4000
...1000	...2000	...3000	> 4000
± 0.8	± 1.2	± 2	± 3
Tolleranze generali angolari			
> 10°	> 10°	> 50°	> 120°
... 50°	... 120°	... 120°	> 120°
± 1°	± 30°	± 20°	± 10°
Description: MAU 1002		Weight Kg: N/A	
Data: 24/10/2019	Scale: 1 : 18	Drawn by: S.C.	
Material:		Treatment:	
		Drawing nr.: MAU_1002_H5K-STD	Rev. 0

This drawing contains information confidential. Any reproduction, disclosure or use of this drawing is expressly prohibited without the prior written consent to GTM & Systems SA