

HEADFORMS - EN 960

O 625

M 605

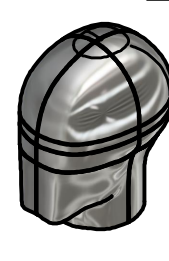
J 575

E 535

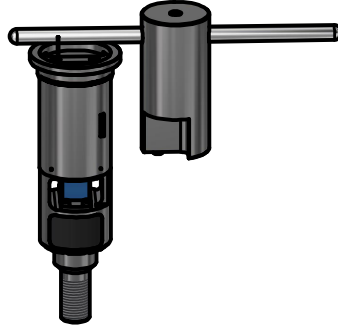
C 515

A 495

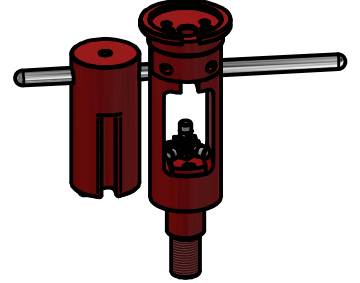
AA 455



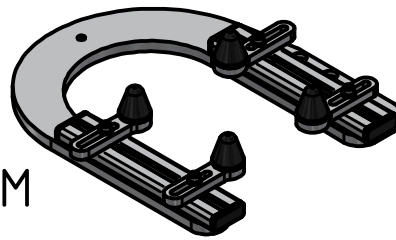
KIT DTS
Wireless



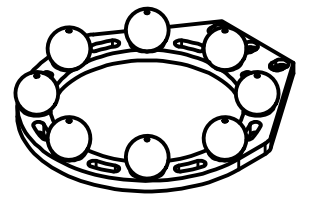
KIT TRIAXIAL
with cable



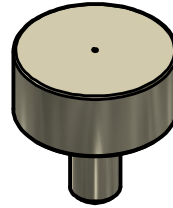
ECE 22/06 + FIM



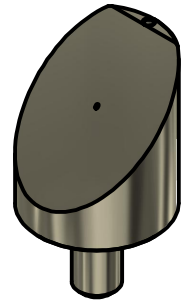
ECE 22/05



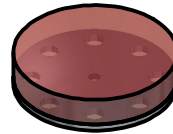
FLAT ANVIL
CE_021



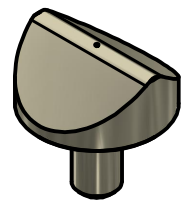
45° ANVIL
CE_049_PIB-Rev.01



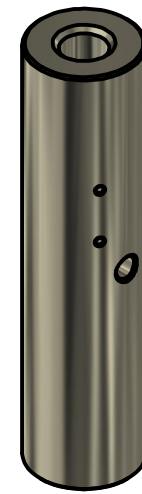
MEP disc



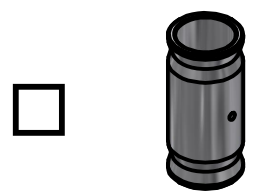
KERBSTONE ANVIL
CE_049



ANVIL SUPPORT
CE_015-Rev.01



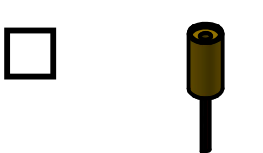
LASER SUPPORT
CE_084_ALU



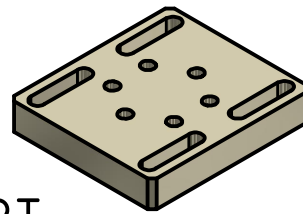
LASER HOLDER
MAU_236



LASER
LQB-2S-670



BASE FOR
ANVIL SUPPORT
CE_015_A_PIB-NEW-Rev.01



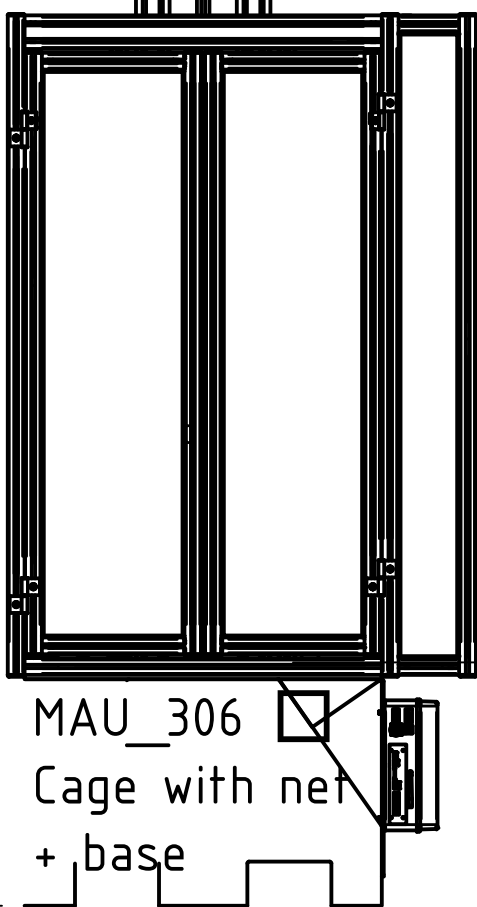
Serial Number:

Customer:

Delivery:

Machine total height L = Drop height + 1700

Column height L = Total height - (580+200)



MAU_306

Cage with net
+ base

| | | |
|--|---------------|--|
| Sheet: 4 Tolleranze generali ISO 2768-m Tolleranze generali lineari > 0.5 > 8 > 30 > 120830120400 ± 0.1 ± 0.2 ± 0.3 ± 0.5 > 400 > 1000 > 2000 > 40001000200030004000 ± 0.8 ± 1.2 ± 2 ± 3 Tolleranze generali angolari > 10° > 10° > 50° > 120°50°120°120° ± 1° ± 30° ± 20° ± 10° | Note: TESTO | Note: TESTO |
| | Note: TESTO | Note: TESTO |
| Description: MAU 1006 | | |
| Data: 03/09/2019 | Scale: 1 : 18 | Weight Kg: N/A |
| Material: | | Drawn by: S.C. |
| Treatment: | | |
| Via Sottomurata n.1 6934 Bioggio tel.: +41(0)91 6001315 fax: +41 (0)91 6001316 info@gtmsa.ch | | Drawing nr.: MAU_1006_H5K_STD-DTS Rev. 0 |

This drawing contains information confidential. Any reproduction, disclosure or use of this drawing is expressly prohibited without the prior written consent to GTM & Systems SA